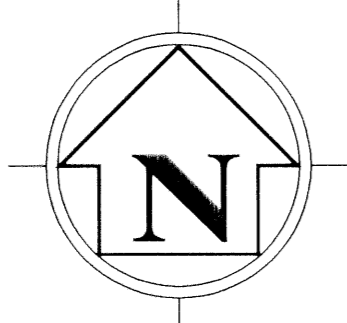
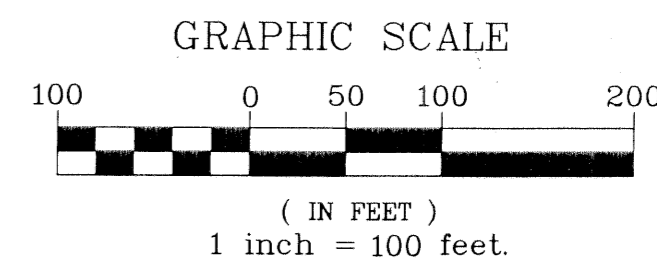


P.G.A. RESORT COMMUNITY GOLF COURSE PLAT

PORTIONS OF SECTIONS 9, 10, 15 AND 16, TOWNSHIP 42 SOUTH,
RANGE 42 EAST, CITY OF PALM BEACH GARDENS,
PALM BEACH COUNTY, FLORIDA.

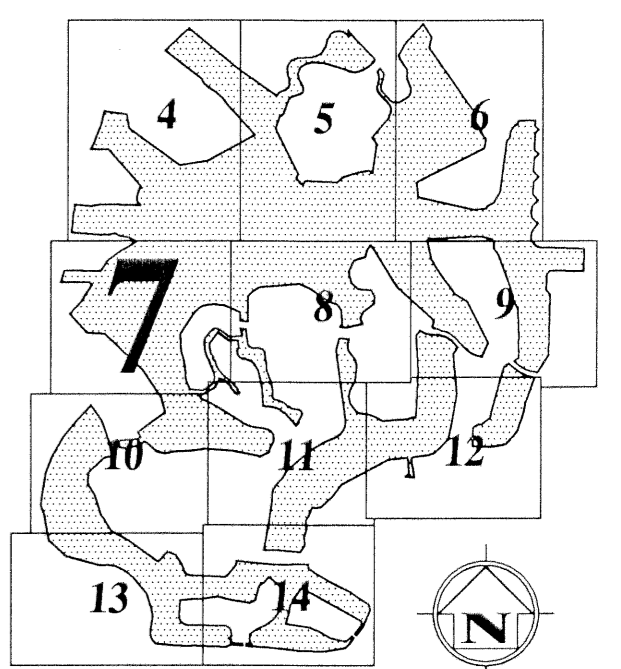
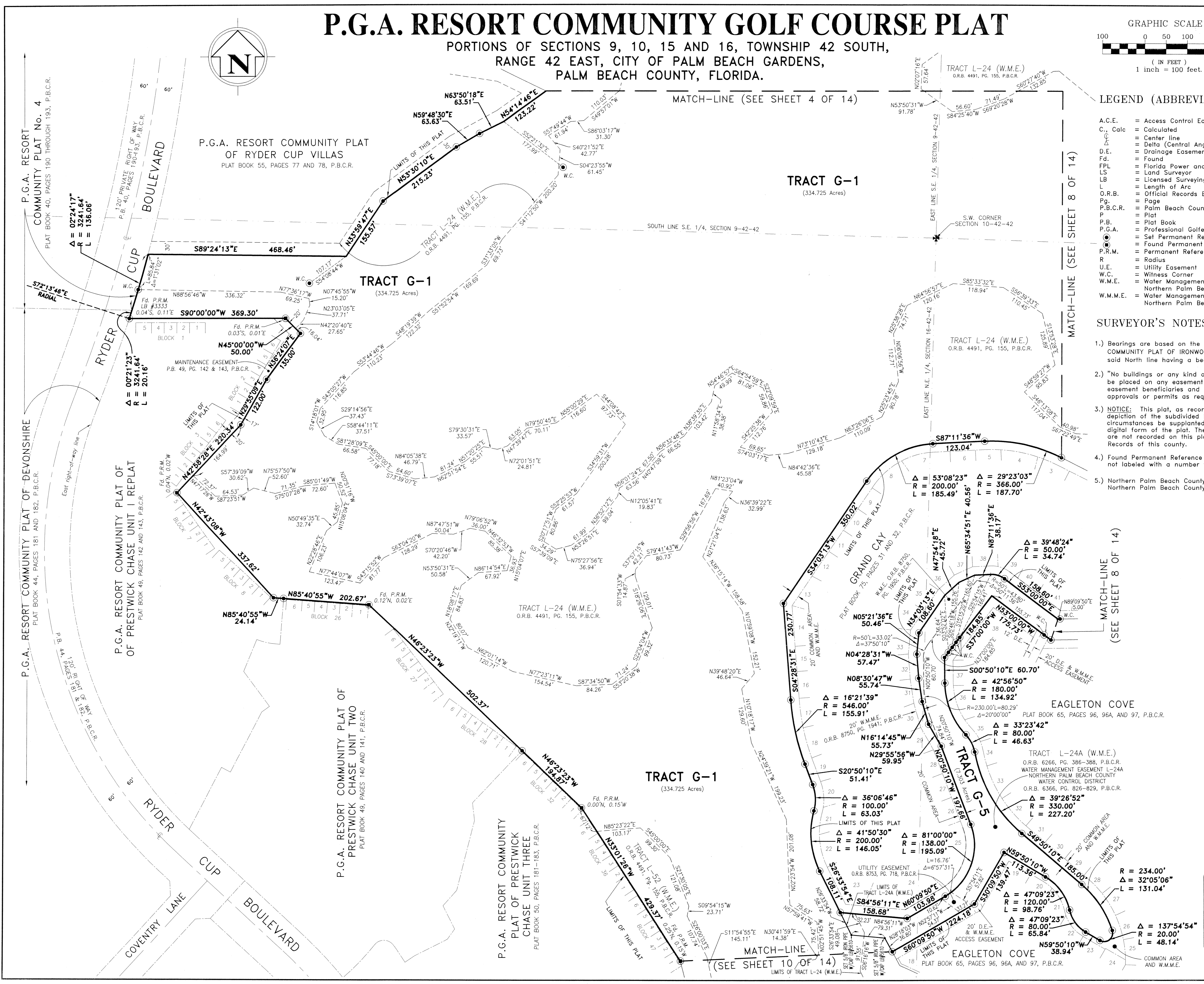


LEGEND (ABBREVIATIONS)

- A.C.E. = Access Control Easement
- C. Calc = Calculated
- C.L. = Center line
- D.C.A. = Delta (Central Angle)
- D.E. = Drainage Easement
- Fd. = Found
- FPL = Florida Power and Light
- LS = Land Surveyor
- LB = Licensed Surveying Business
- L = Length of Arc
- O.R.B. = Official Records Book
- Pg. = Page
- P.B.C.R. = Palm Beach County Records
- Pt. = Plat
- P.B. = Plat Book
- P.G.A. = Professional Golfers Association
- = Set Permanent Reference Monument stamped (P.R.M. LB 5610)
- = Found Permanent Reference Monument
- ⊙ = Permanent Reference Monument
- R = Radius
- U.E. = Utility Easement
- W.C. = Witness Corner
- W.M.E. = Water Management Easement in favor of Northern Palm Beach County Improvement District
- W.M.M.E. = Water Management Maintenance Easement in favor of Northern Palm Beach County Improvement District

SURVEYOR'S NOTES:

- 1.) Bearings are based on the North line of the plat of P.G.A. RESORT COMMUNITY PLAT OF IRONWOOD NO.1 (P.B. 42, Pages 9 and 10) said North line having a bearing of South 89°29'05" East.
- 2.) "No buildings or any kind of construction or trees or shrubs shall be placed on any easement without prior written approval of all easement beneficiaries and all applicable City of Palm Beach Gardens approvals or permits as required for such encroachments".
- 3.) NOTICE: This plat, as recorded in its graphic form, is the official depiction of the subdivided lands described herein and will in no circumstances be supplanted in authority by any other graphic or digital form of the plat. There may be additional restrictions that are not recorded on this plat that may be found in the Public Records of this county.
- 4.) Found Permanent Reference Monuments (Fd. P.R.M.) shown hereon not labeled with a number were illegible or unmarked.
- 5.) Northern Palm Beach County Water Control District is now known as Northern Palm Beach County Improvement District.



This Instrument Prepared By:

Wilson E. Way
2200 PARK CENTRAL BLVD. NORTH
SUITE 800
POMPANO BEACH, FLORIDA 33064
(954) 974-2200

CCU CONSULTANTS
ENGINEERS SURVEYORS PLANNERS
LANDSCAPE ARCHITECTS ENVIRONMENTAL CONSULTANTS